

2025 IMPACT REPORT



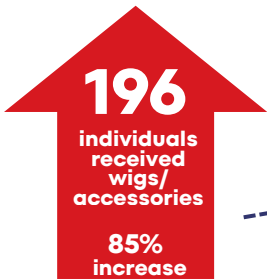
570
individuals served
3% increase



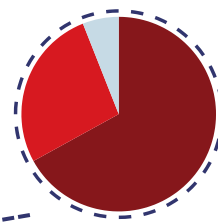
752
programs delivered
3% increase



6935
program attendances
18% increase



19
counties served
Knox County 67%
Surrounding Counties 27%
(Anderson, Blount, Grainger, Jefferson, Loudon, Roane, Sevier & Union)
11 ETN Counties 6%



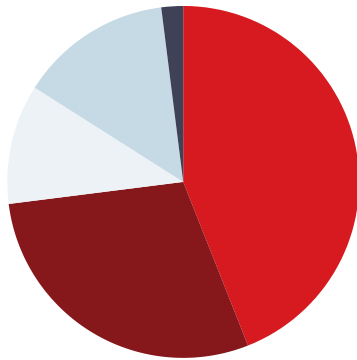
cost to participate
ALWAYS
\$0.00



INCOME

Total Income*
\$837,655

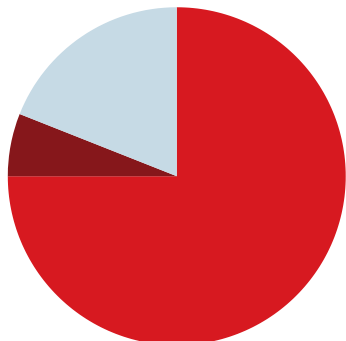
- General Contributions 44%
- Fundraisers 29%
- Grants 11%
- Miscellaneous 14%
- Interest 2%



EXPENSES

Total Expenses*
\$768,776

- Program Expenses 75%
- Management & Administration 6%
- Fundraising Expenses 19%



PROGRAM HIGHLIGHTS

Our mission is to uplift and strengthen all people impacted by cancer, so they live as well as possible despite the challenges of cancer.

2025 Program Highlights:

6935 program visits- most in 35-year history of CSCET!

Educational Topics

- Cancer Imaging
- Prostate Cancer
- Understanding Lab Results
- The Role of Pelvic Floor Therapy Following Cancer Treatment
- Understanding & Preventing Caregiver Burnout
- Clinical Trials

Support Groups and Individual Support Sessions:

- Added a new, in-person, weekly support group for people with cancer

Series:

- 8-week Mindfulness-Based Stress Reduction
- 4-week Cancer Transitions
- 4-week Cultivating Balance Through Mindfulness
- 3-week Stress Management 101
- 4-day Kids Week

Thank you to our volunteers and community friends for ensuring that all CSCET programs remain at no charge. Together we ensure that no one faces cancer alone.

If you would like information about any CSCET matter – programs or financials – please contact Jennifer Harrell, executive director, or Tonia Mostella, board president.

98% of funds raised stay in East Tennessee